

DESCRIPTION

AMC MODEL SW-2181-2A-305 IS A REFLECTIVE SPDT SWITCH MODULE WITH INTEGRAL TTL DRIVER, PACKAGED IN A LOW PROFILE HOUSING.

SPECIFICATIONS

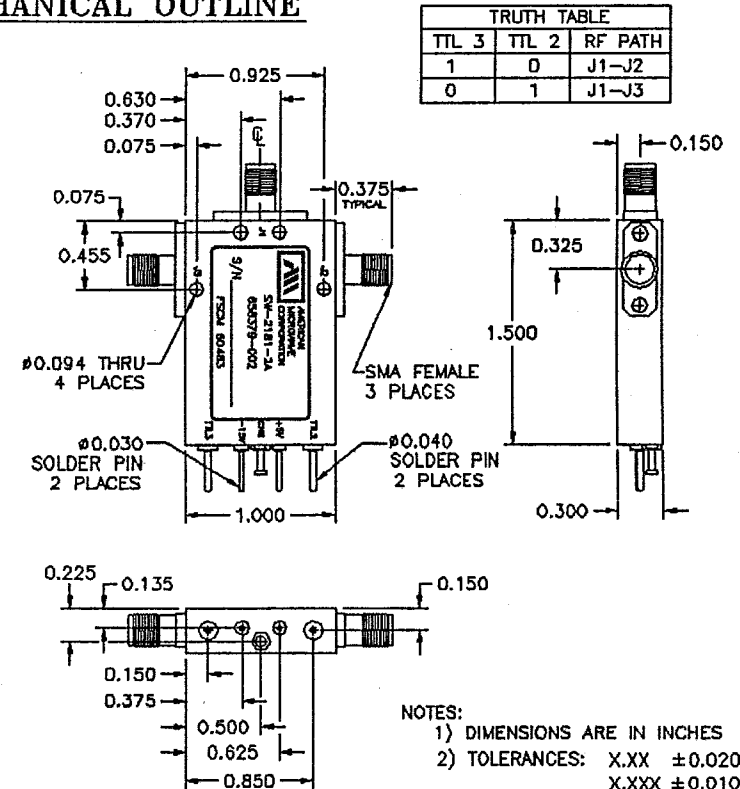
- FREQUENCY RANGE 0.5-20 GHz MINIMUM
- INSERTION LOSS 2.5 dB MAXIMUM
- ISOLATION 0.5-2 GHz, 85 dB MINIMUM
 2-4 GHz, 80 dB MINIMUM
 4-8 GHz, 75 dB MINIMUM
 8-12 GHz, 65 dB MINIMUM
 12-18 GHz, 55 dB MINIMUM
 18-20 GHz, 50 dB MINIMUM
- VSWR (ON) 0.5-18 GHz, 1.9:1 MAXIMUM
 18-20 GHz, 2.0:1 MAXIMUM
- SWITCHING TIME
 RISE (10% RF TO 90% RF) 50 ns MAXIMUM
 FALL (90% RF TO 10% RF) 50 ns MAXIMUM
 ON (50% TTL TO 90% RF) 150 ns MAXIMUM
 OFF (50% TTL TO 10% RF) 150 ns MAXIMUM
- CONTROL TTL COMPATIBLE, UNITY LOAD
 2 INDEPENDENT CONTROLS
 LOGIC "0" = INSERTION LOSS
 LOGIC "1" = ISOLATION
 (SEE TRUTH TABLE)
- RF POWER RATINGS 1W CW MAXIMUM
- POWER SUPPLY +5VDC $\pm 5\%$ @ 75 mA MAXIMUM
 -15VDC $\pm 5\%$ @ 50 mA MAXIMUM
- CONNECTORS
 RF INPUT/OUTPUT SMA (FEMALE)
 POWER SOLDER PIN
 CONTROL SOLDER PIN
- SIZE 1.0" x 1.5" x 0.3"

AVAILABLE OPTIONS

- A01 50 Ω CONTROL IMPEDANCE
- A02 100 Ω CONTROL IMPEDANCE
- A03 INVERSE CONTROL LOGIC (LOGIC "0" ISOLATION)
- A04 INPUT/OUTPUT VIDEO FILTER (0.5 dB EXCESS LOSS)
- A05 SINGLE CONTROL (LOGIC "0" = J1-J2 PATH ON)
- A14 J1 SMA MALE, J2 AND J3 SMA FEMALE
- A15 J1 SMA FEMALE, J2 AND J3 SMA MALE
- A16 +15VDC SUPPLY

ZONE		REV.	DESCRIPTION	DATE	APPROVED
A			ORIGINAL RELEASE, JOB # 20118-1	11/22/92	<i>Jay</i>

MECHANICAL OUTLINE



- NOTES:
- 1) DIMENSIONS ARE IN INCHES
 - 2) TOLERANCES: X.XX ± 0.020
 X.XXX ± 0.010
 - 3) WEIGHT: APPROX. 1.2 OZ

ENVIRONMENTAL RATINGS

- TEMPERATURE -55°C TO +95°C (OPERATING)
 -65°C TO +125°C (STORAGE)
- HUMIDITY MIL-STD-202F, METHOD 103B COND. B
- SHOCK MIL-STD-202F, METHOD 213B COND. B
- VIBRATION MIL-STD-202F, METHOD 204D COND. B
- ALTITUDE MIL-STD-202F, METHOD 105C COND. B
- TEMPERATURE CYCLE MIL-STD-202F, METHOD 107D COND. A



AMERICAN MICROWAVE CORPORATION

7311G GROVE RD., FREDERICK, MD. 21701
 TEL: (301) 662-4700 FAX: (301) 662-4938

APPROVALS	DATE
DRAWN <i>[Signature]</i>	11/22/92
CHECKED <i>[Signature]</i>	11/22/92

PRODUCT FEATURE

SW-2181-2A-305

0.5-20 GHz, SPDT REFLECTIVE SWITCH MODULE

SIZE A SHEET 1 OF 2 DWG. # 100-2864

3-35